

Violin

Castle Vania Medley

Arr. by Thom Zolghadr

5 Level 1

9

12

16

20 Level 2

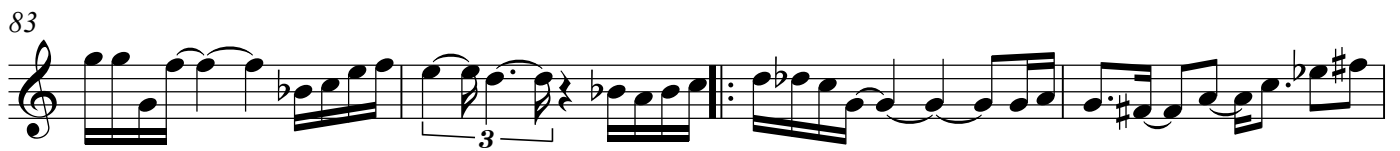
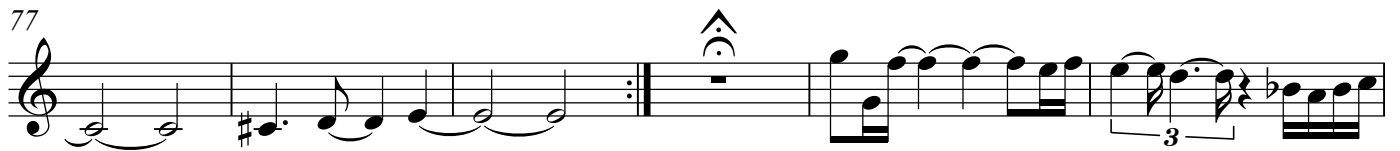
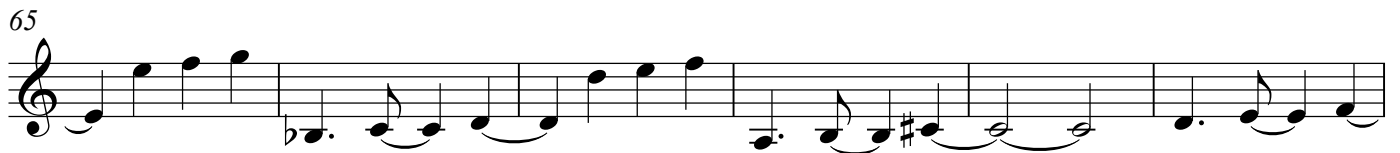
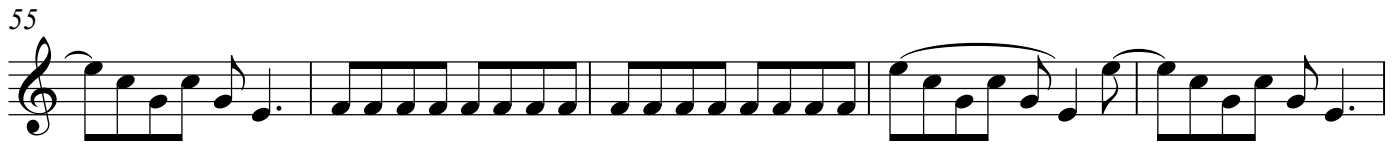
24

28 Level 3

32

36

V.S.



91

1 4 3 2 1 3 1 1

Detailed description: This staff contains measures 91 through 94. It begins with a treble clef and a key signature of one flat. The music features a series of eighth and sixteenth notes, with some slurs and accents. A fingering sequence '1 4 3 2 1 3 1 1' is written below the staff at the end of the line.

95

Outside "Bloody Tears"

Detailed description: This staff contains measures 95 through 98. It starts with a treble clef and a key signature of one flat. Measure 95 has a fermata over a quarter note. Measures 96-97 are marked with a repeat sign. Measure 98 is marked with a fermata and an accent. A box labeled 'Outside "Bloody Tears"' is placed above the staff.

99

Detailed description: This staff contains measures 99 through 101. It features a treble clef and a key signature of one flat. The music consists of a continuous eighth-note pattern with slurs.

102

Detailed description: This staff contains measures 102 through 106. It features a treble clef and a key signature of one flat. The music consists of a continuous eighth-note pattern with slurs.

107

Detailed description: This staff contains measures 107 through 110. It features a treble clef and a key signature of one flat. The music consists of a continuous eighth-note pattern with slurs.

111

Castle Walls
3rd time trem.

Detailed description: This staff contains measures 111 through 114. It features a treble clef and a key signature of one flat. Measures 111-113 are marked with a repeat sign. Measure 114 is marked with a fermata and an accent. A box labeled 'Castle Walls 3rd time trem.' is placed above the staff.

115

Detailed description: This staff contains measures 115 through 119. It features a treble clef and a key signature of one flat. The music consists of a continuous eighth-note pattern with slurs.

120

Spiccato

Detailed description: This staff contains measures 120 through 124. It features a treble clef and a key signature of one flat. The music consists of a continuous eighth-note pattern with slurs. The word 'Spiccato' is written above the staff.

125

x2

Detailed description: This staff contains measures 125 through 129. It features a treble clef and a key signature of one flat. The music consists of a continuous eighth-note pattern with slurs. The text 'x2' is written at the end of the staff.

130

Detailed description: This staff contains measures 130 through 134. It features a treble clef and a key signature of one flat. The music consists of a continuous eighth-note pattern with slurs.

